



Post-Test

Name _____ Date _____

Read each question or statement below. Choose the one best response and circle the letter of the choice.

1. Humans have traveled to:

- a) Mercury
- c) Venus

- b) Mars
- d) the Moon

2. The presence of a magnetic field indicates that a planet may have:

- a) an iron core
- c) oceans

- b) an atmosphere
- d) a high surface temperature

3. One astronomical unit is equal to the distance between the earth and:

- a) Mercury
- c) Pluto

- b) the Moon
- d) the Sun

4. The atmosphere of Venus is 96 percent:

- a) sulfuric acid
- c) carbon dioxide

- b) oxygen
- d) nitrogen

5. Clouds in the atmosphere of Venus are composed of droplets of:

- a) liquid hydrogen
- c) ammonia

- b) oxygen
- d) carbon dioxide

6. Heat is trapped on the surface of Venus by high atmospheric levels of:

- a) water vapor
- c) ammonia

- b) sulfuric acid
- d) carbon dioxide

7. The terrestrial planets are composed mostly of:

- a) liquid metal
- c) a core

- b) ocean of water
- d) an atmosphere





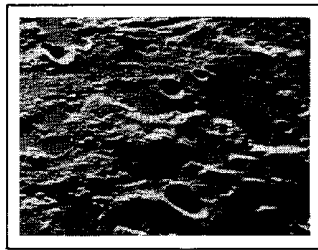
8. The earth is the only planet in the solar system that has:

- a) clouds
- b) oceans of water
- c) a core
- d) an atmosphere

9. Great cracks in the surface of Mars were probably formed by:

- a) erosion
- b) ice caps
- c) meteors
- d) fault zones

10. In the photograph, the circular features on the planet's surface are:



- a) ocean basins
- b) valleys
- c) impact craters
- d) volcanoes

11. Which of the following is a terrestrial planet?

- a) Pluto
- b) Uranus
- c) Mars
- d) Jupiter

12. The largest volcanoes in the solar system are most likely on:

- a) Mars
- b) Jupiter
- c) Earth
- d) Pluto

13. Olympus Mons is large volcano on:

- a) the Moon
- b) Earth
- c) Mars
- d) Jupiter

14) Which of the following is one of the giant planets?

- a) Mars
- b) Uranus
- c) Venus
- d) Pluto



Planet	Average distance from sun (106 Km)	Diameter (Km)	Rate of rotation (Each time)
1	57.9	4,878	59 d
2	108.2	12,104	-243 d
3	149.6	12,756	23 hr 56 min
4	227.9	6,794	24 hr 37 min
5	778.3	142,796	9 hr 50 min
6	1,427	120,660	10 hr 40 min
7	2,871	52,400	17 hr 14 min
8	4,497	50,450	16 hr 06 min
9	5,914	2,445	6.4 d

15. Which planet in the table above represents Jupiter?

- a) 4
- b) 5
- c) 6
- d) 7

16. Which planet in the diagram above has the lowest density?

- a) 2
- b) 4
- c) 6
- d) 8

17. The bands on planet 5 in the diagram above are caused by:

- a) Volcanic Activity
- b) Rotating Moons
- c) Swirling Gases
- d) Nuclear Fusion

18. What is the name of the planet in the diagram above?

- a) Pluto
- b) Venus
- c) Neptune
- d) Uranus

19. The first planet whose existence was predicted before it was discovered was:

- a) Pluto
- b) Venus
- c) Neptune
- d) Uranus

20. The planet discovered in 1930 by Clyde Tombaugh is called:

- a) Pluto
- b) Uranus
- c) Neptune
- d) Charon





ANSWER KEY

- 1) d
- 2) a
- 3) d
- 4) c
- 5) d
- 6) d
- 7) c
- 8) b
- 9) d
- 10) c
- 11) c
- 12) a
- 13) c
- 14) b
- 15) b
- 16) c
- 17) c
- 18) d
- 19) b
- 20) a